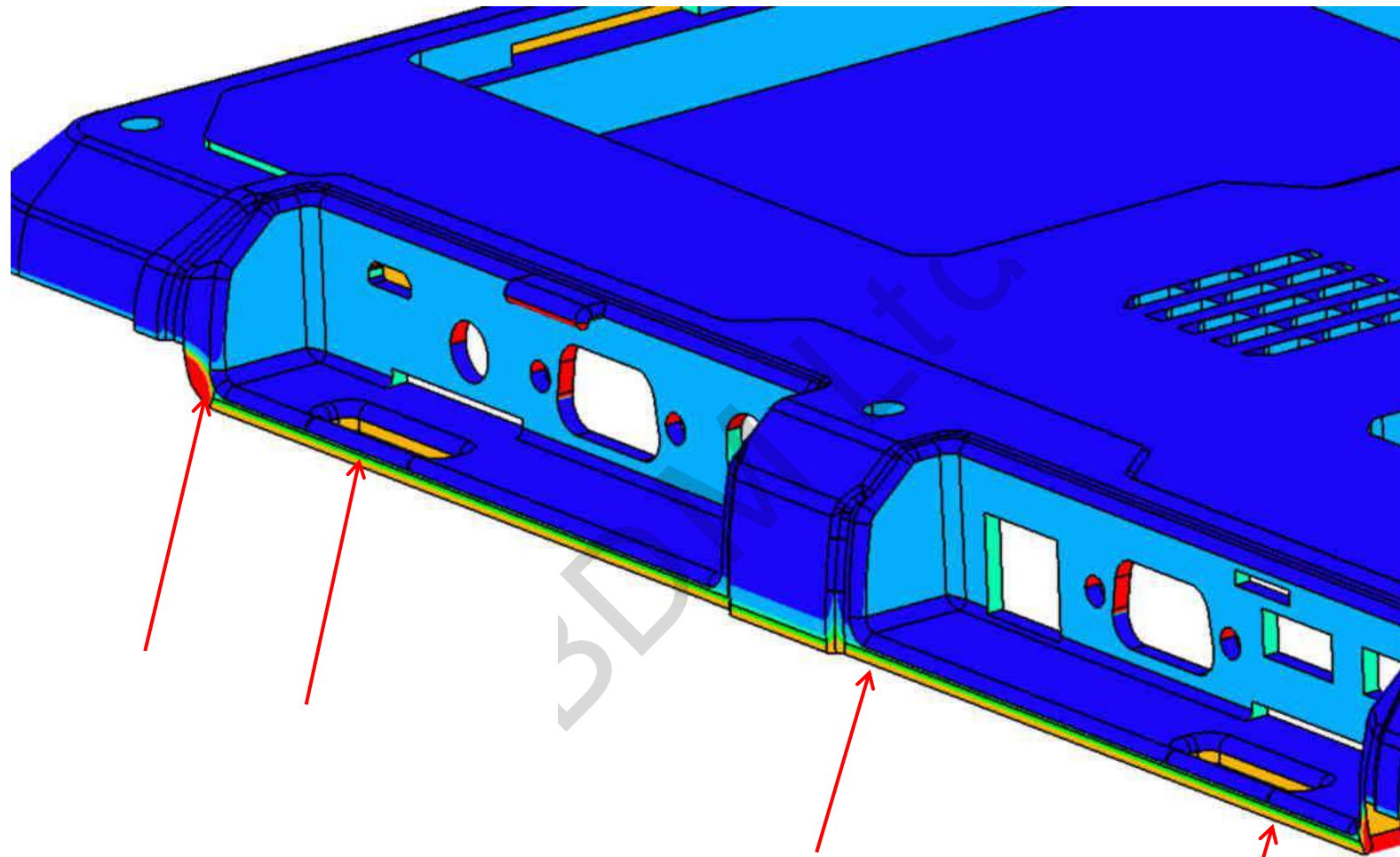




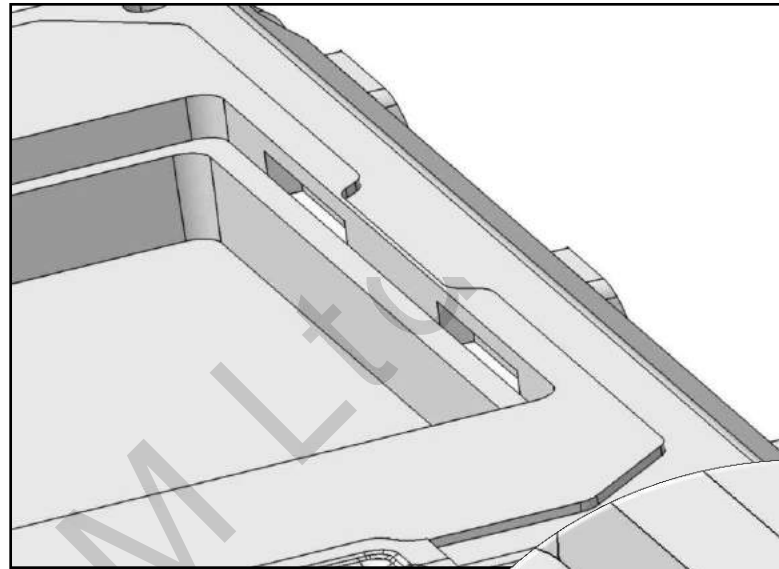
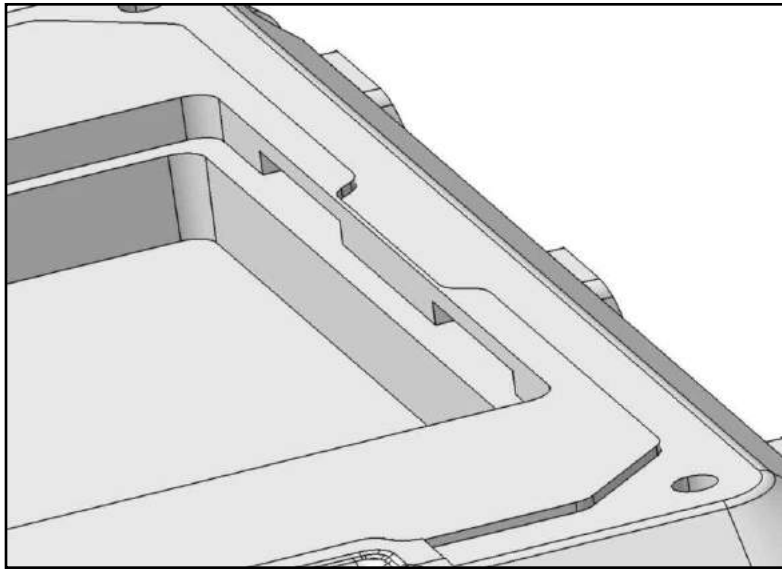
**PRODUCT DFM REPORT**  
(产品结构评审)



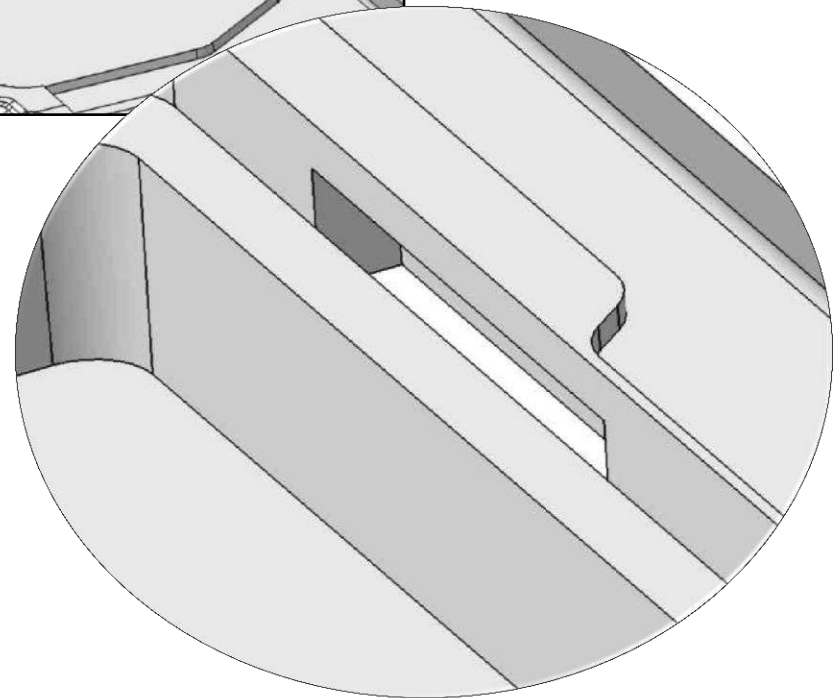
Project Name (项目名称):	Handle Tablet	Checked By (审核):	杨金坡
Project Manager (项目经理):	邱振彬	Date (日期):	2017-02-24
Mobile (电话):	--	Website (网址):	www.bestcreating.com
Email (邮箱):	--	Version (版本):	V0.1

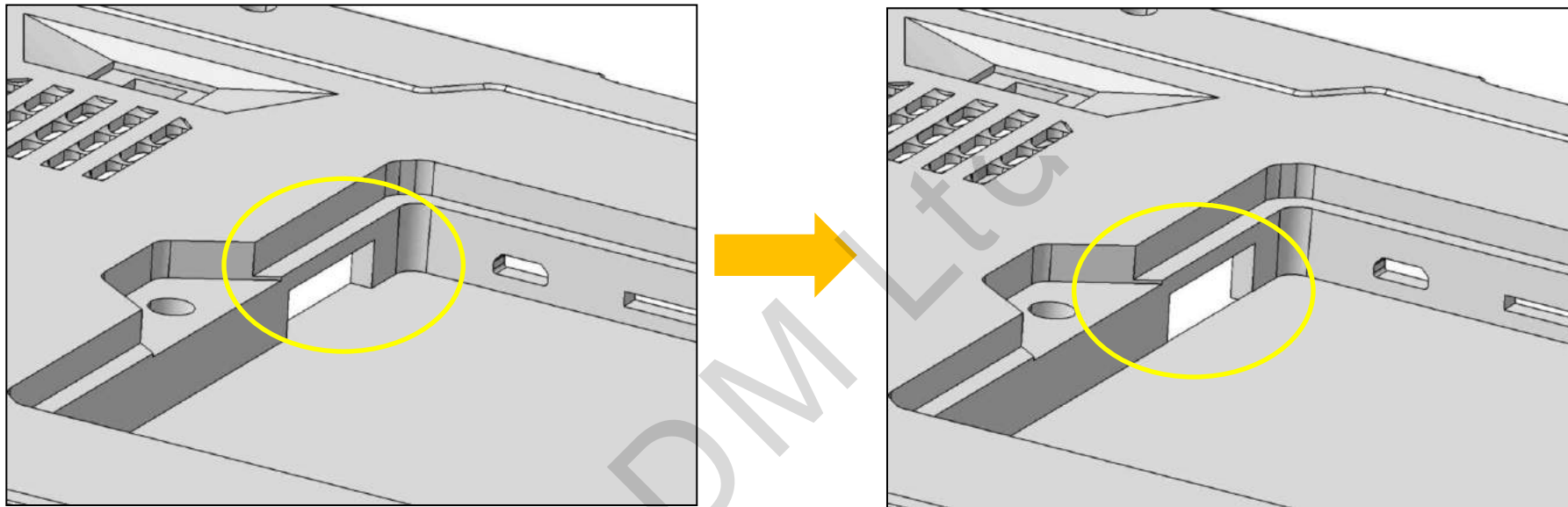


Here are the slight undercut.  
Please modify the drawing.

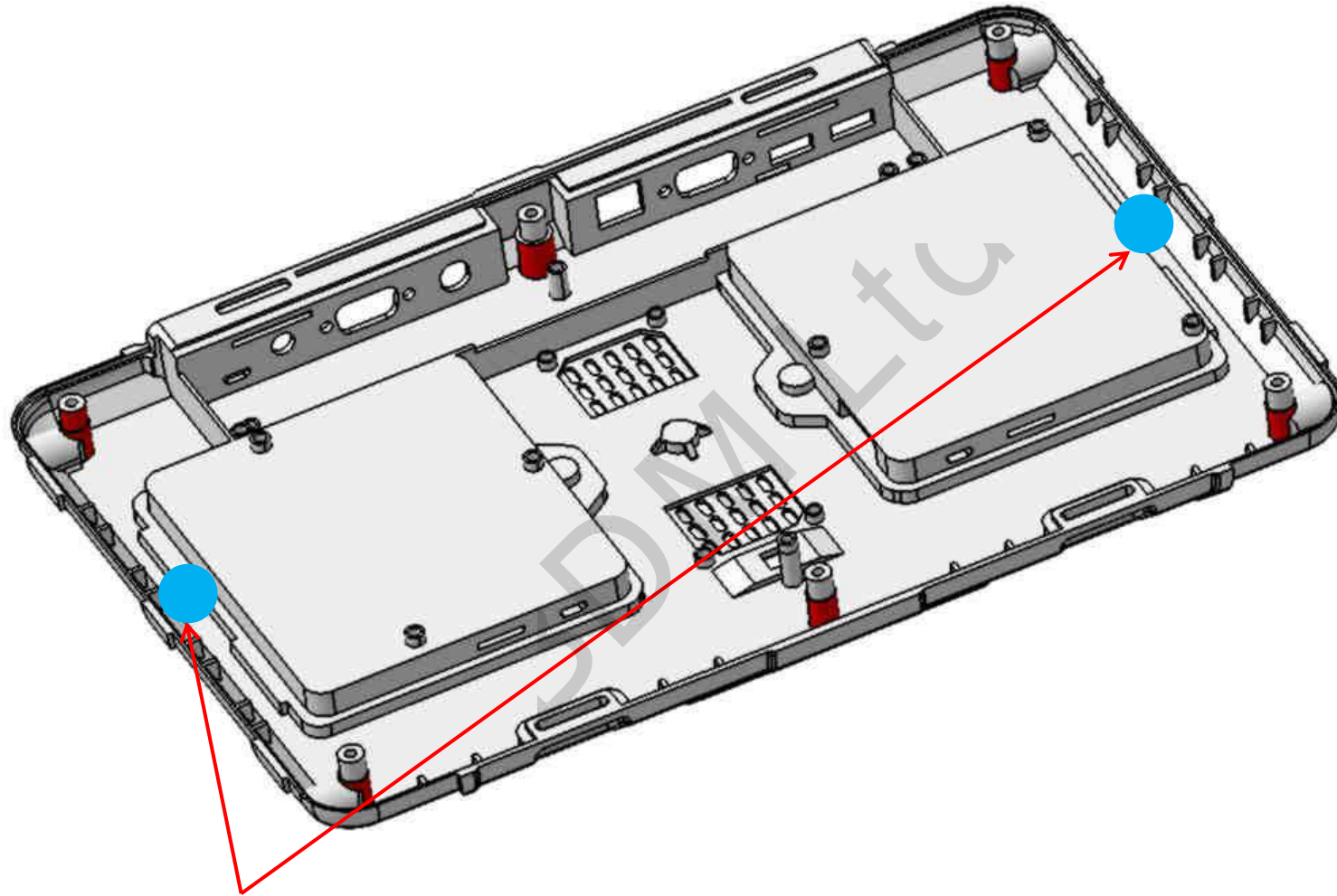


Suggest to change like this to avoid the angle lifter action.  
Is this ok?



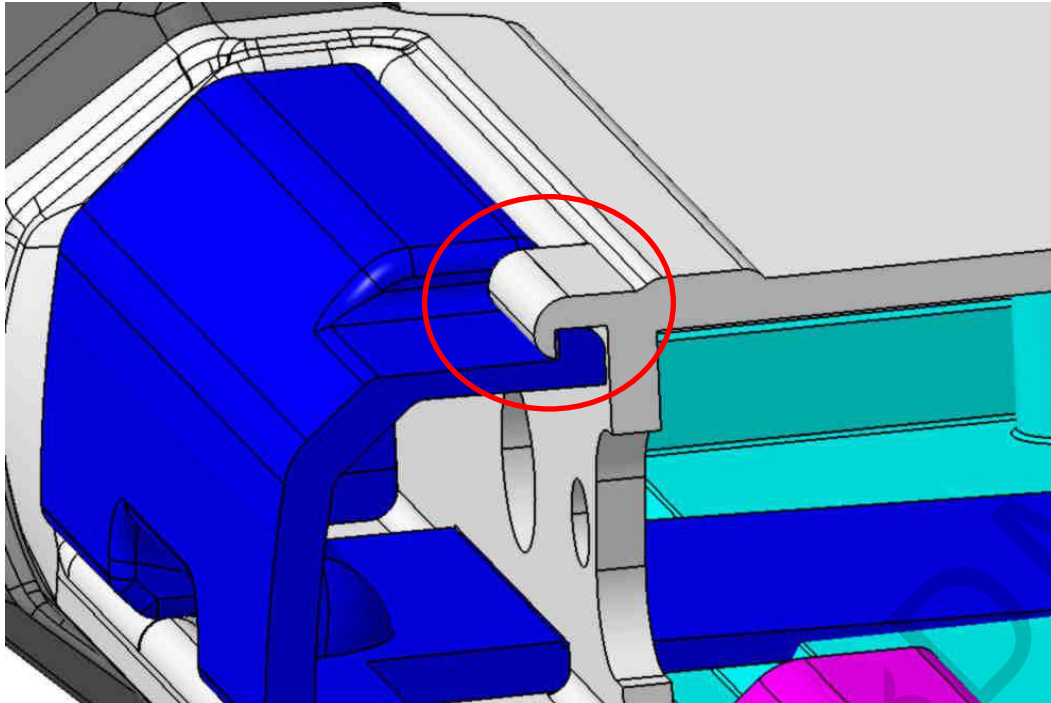


Suggest to change like this to avoid the angle lifter action. Is this ok?

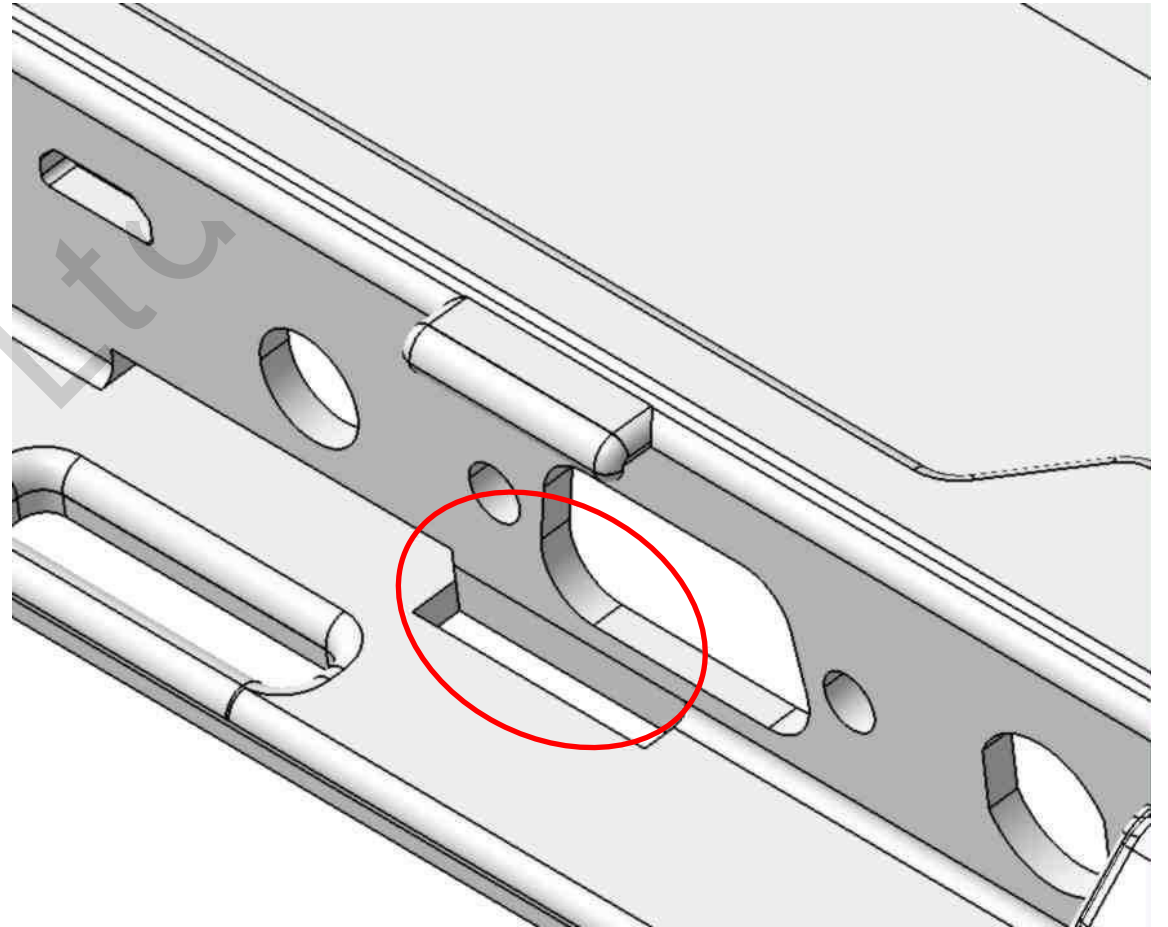


Is it possible to add 2 more screws?

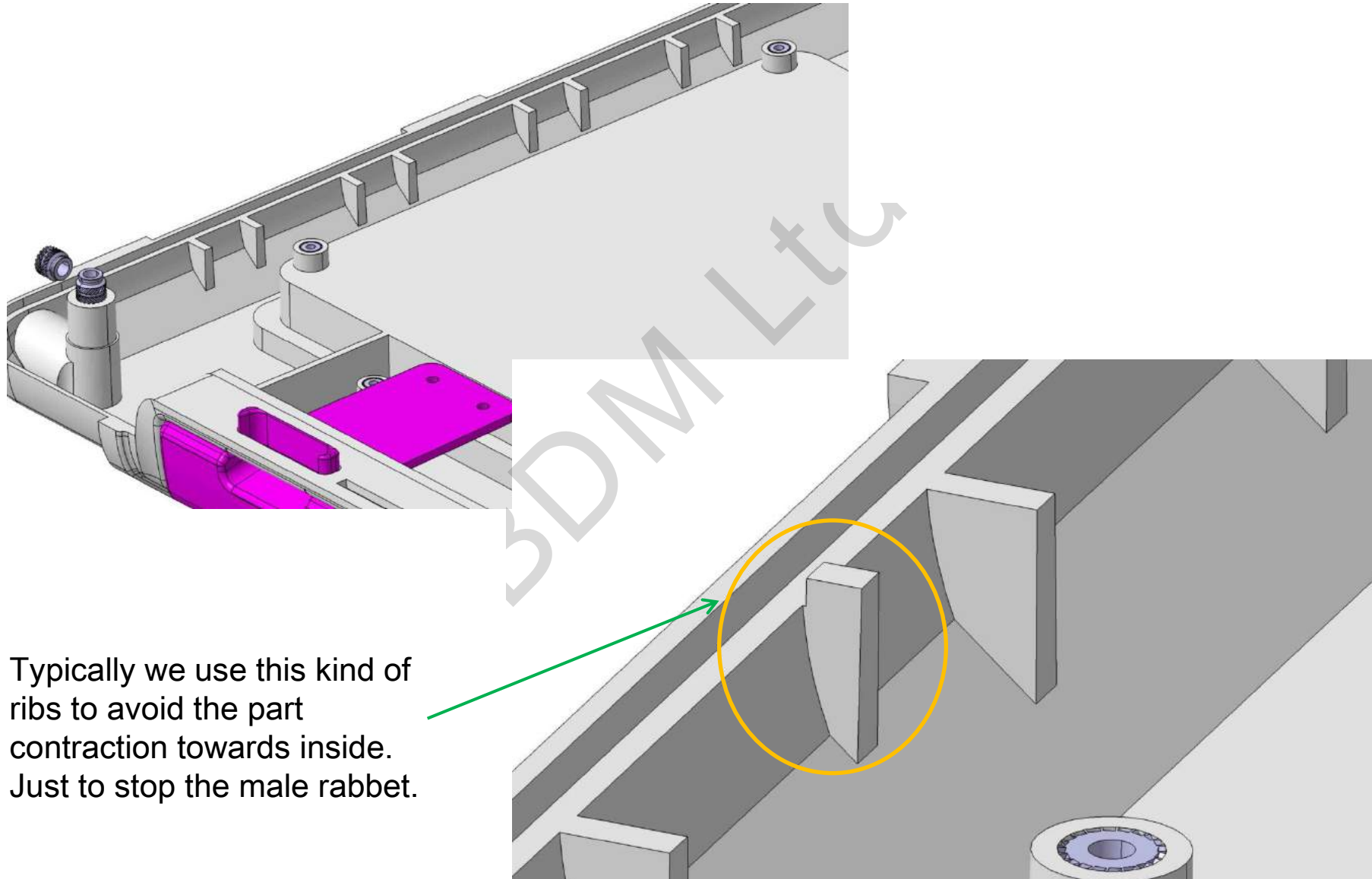




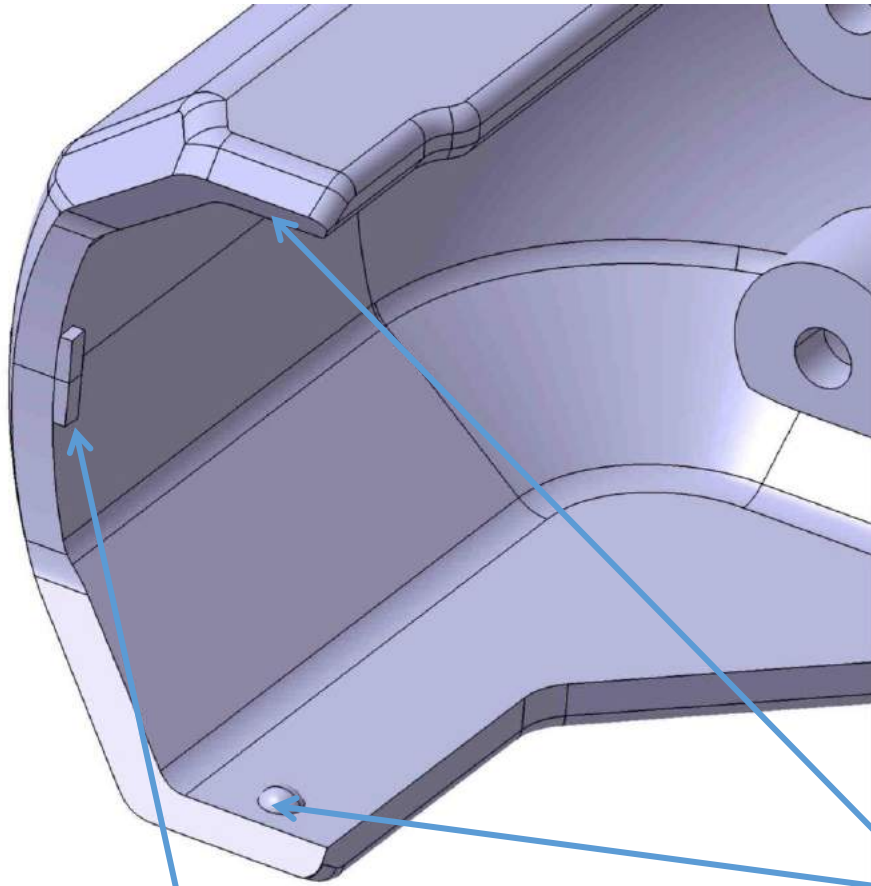
The snap here is not available when molding. See next page.



We advise to make a hole at the bottom

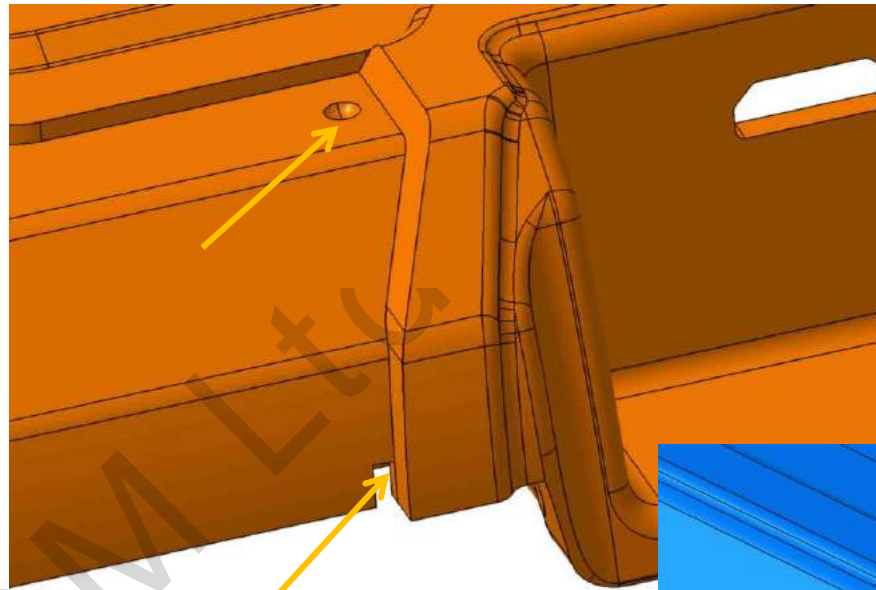


Typically we use this kind of ribs to avoid the part contraction towards inside. Just to stop the male rabbet.

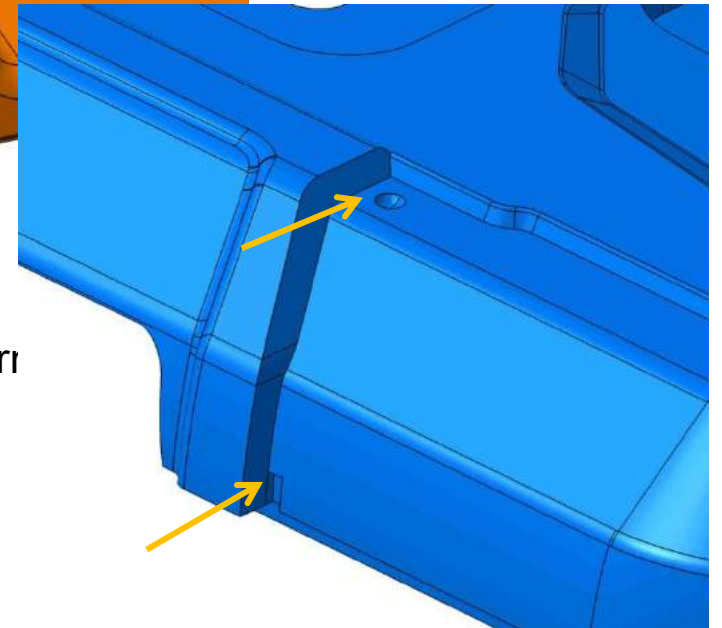


Add the rib to help to hold it in place.

Add some glue on the dots to help to hold the TPE.

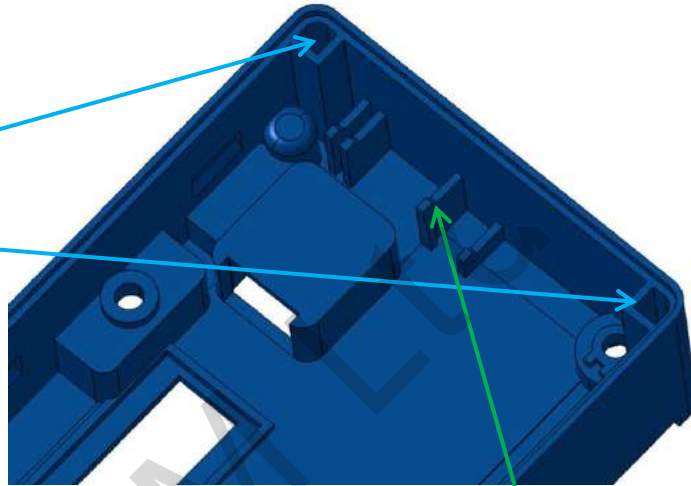


Modification in turr  
Is this ok?

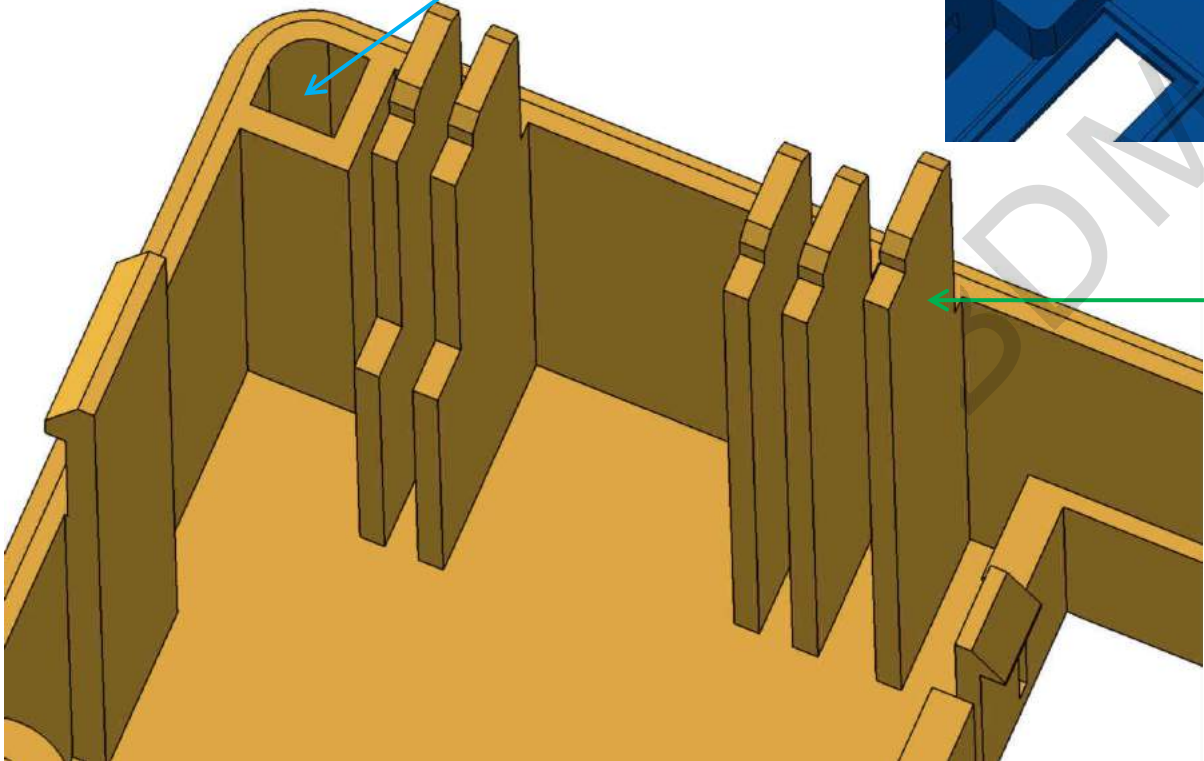


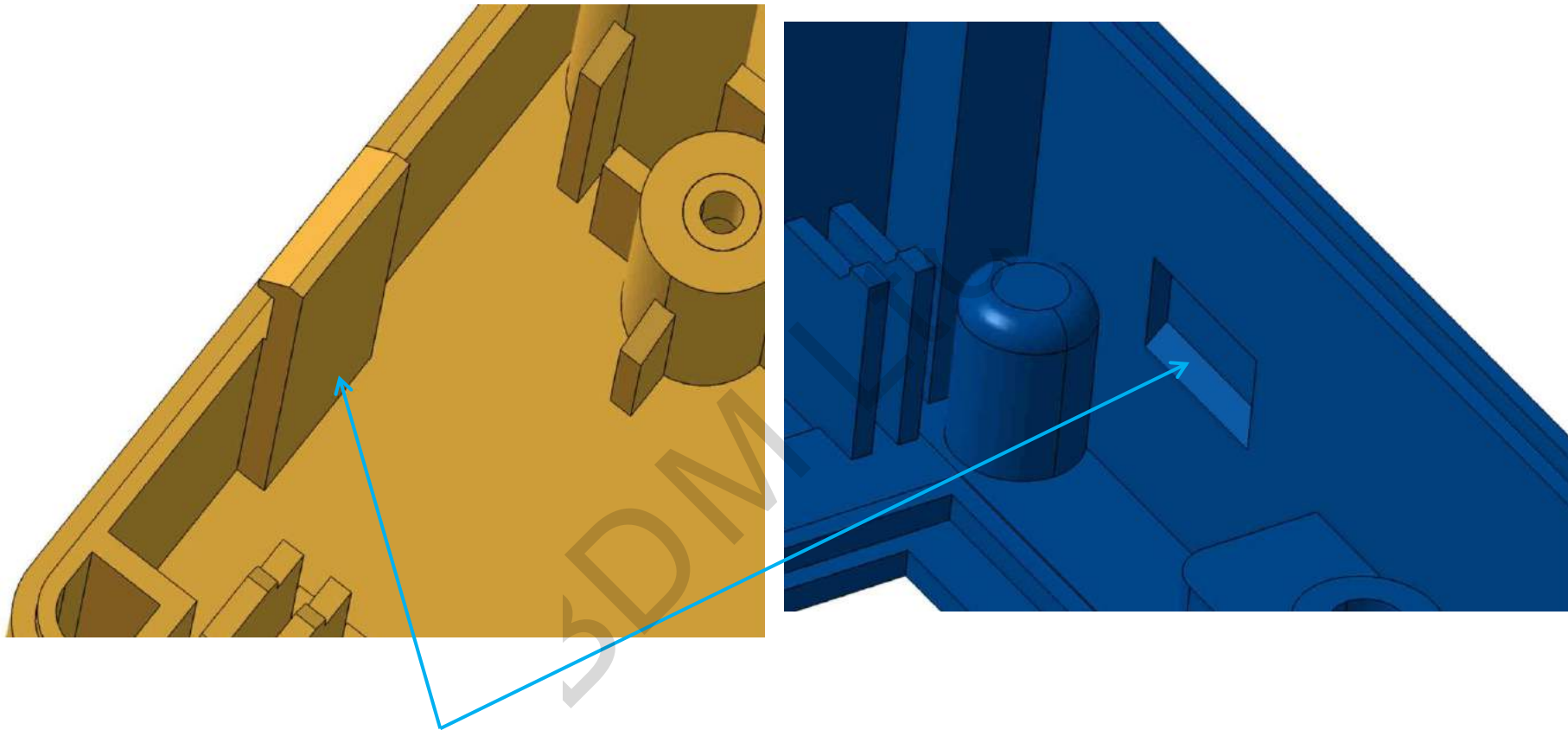


This design will lead to a separate steel in the mold, can you change the design to avoid it?



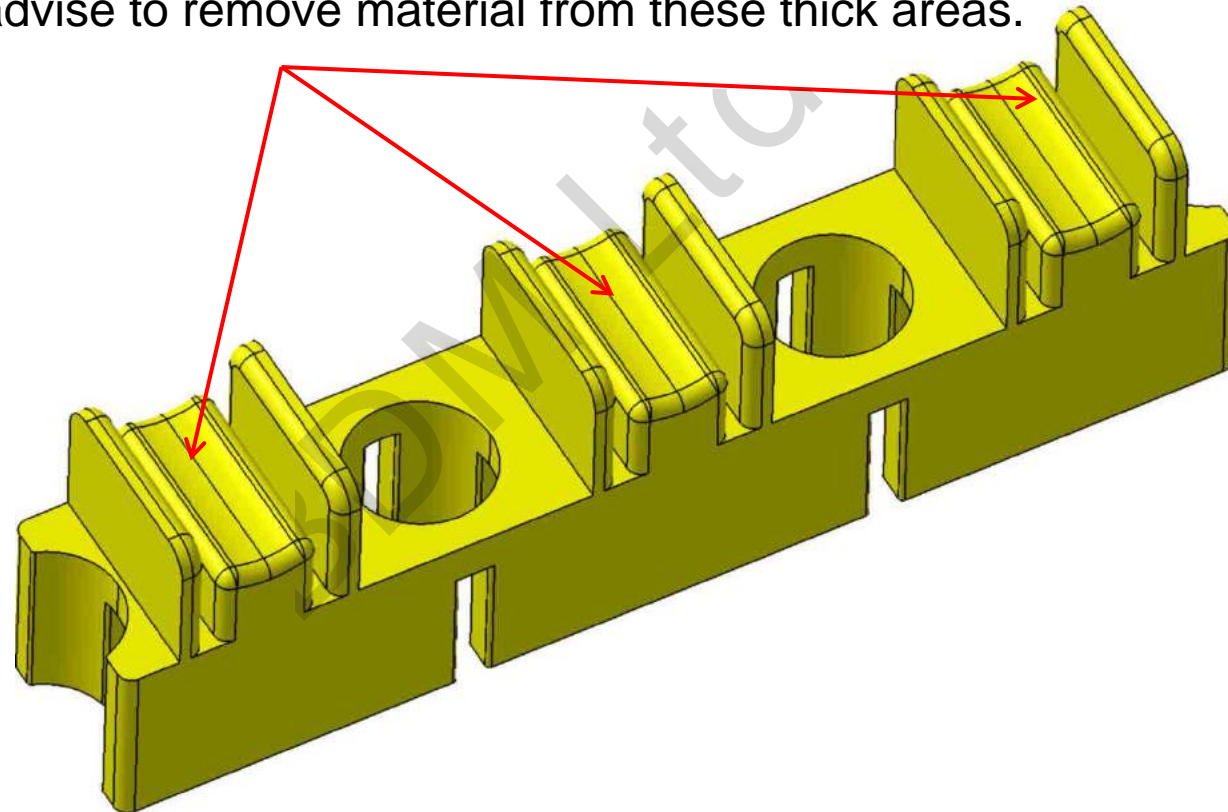
Please make the thickness of the ribs 1.2mm. Typically 1/3~1/2 of the nominal wall thickness is ok.





This kind of snaps or hook is not recommended.  
As the bottom area will be very thick, sink marks can't be avoided.  
And the shape is also not recommended.  
See the next page for the snaps we typically used.

We advise to remove material from these thick areas.





THANKS